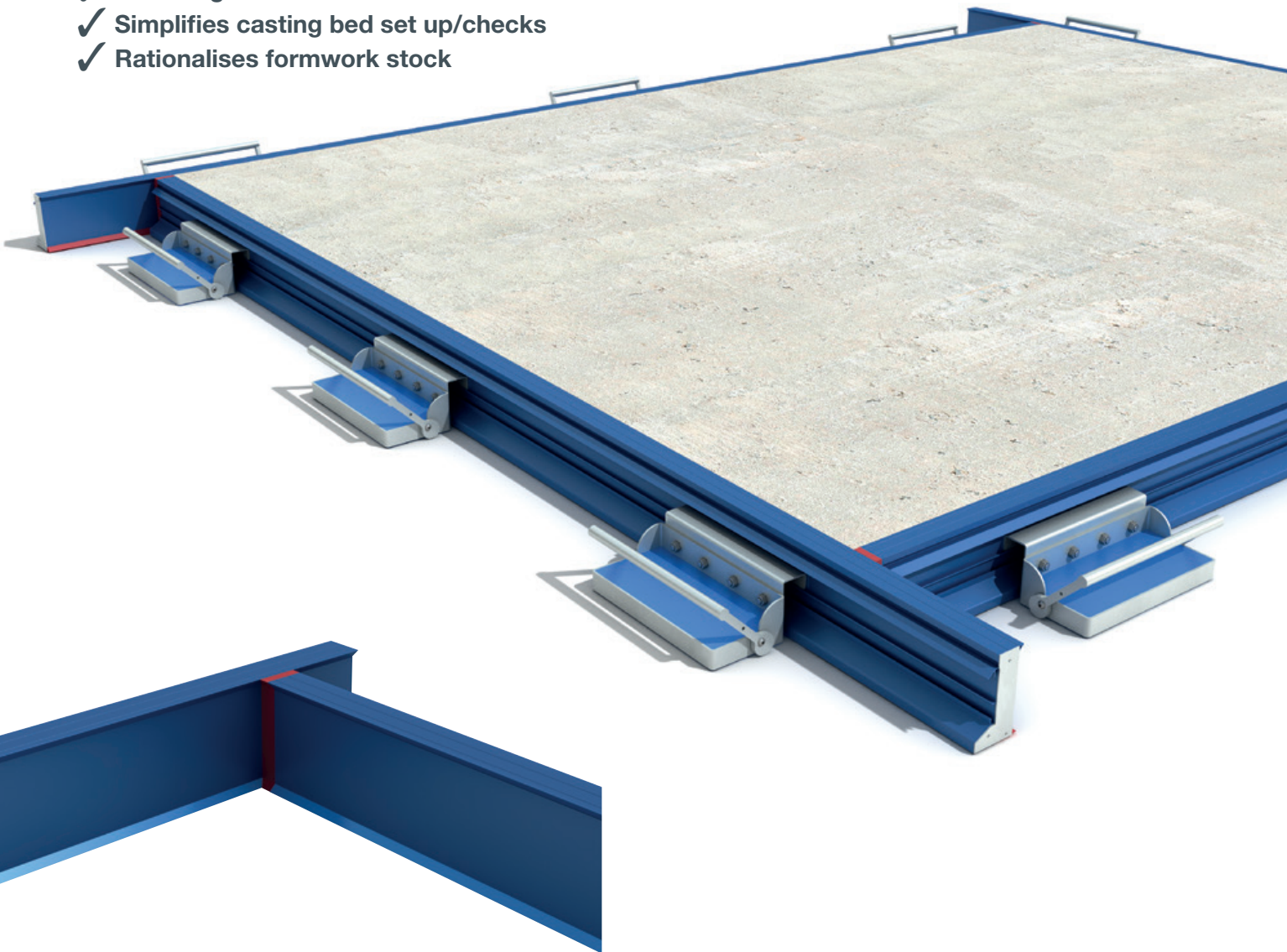


QwikForm

Innovative, modular, feature-packed, aluminium formwork system that provides significant advantages over traditional timber and steel formwork

- ✓ Saves significant time and labour
- ✓ Simplifies casting bed set up/checks
- ✓ Rationalises formwork stock

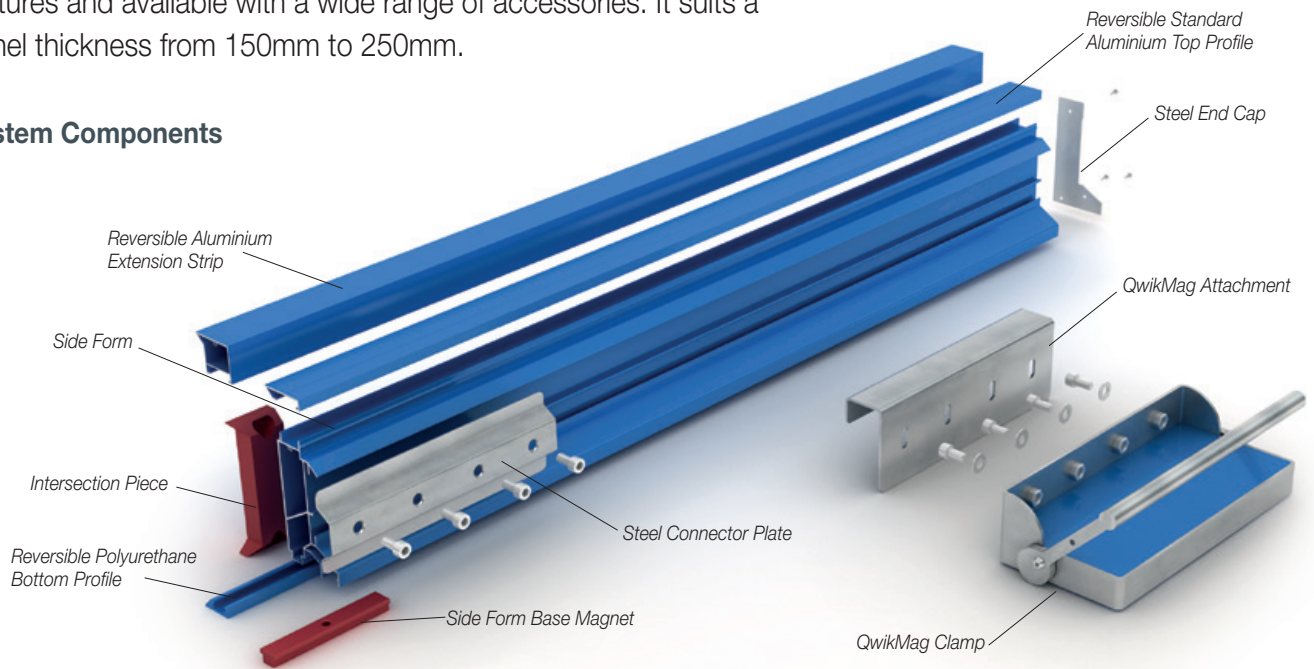


Suits a panel thickness of 150mm to 250mm

QwikForm

QwikForm is a rigid freestanding formwork system for use on steel casting beds, modular in construction, packed full of user-friendly features and available with a wide range of accessories. It suits a panel thickness from 150mm to 250mm.

System Components



System Features

- ✓ Magnets in the base are easily locked down locating the unit in desired position
- ✓ Durable non-stick powder coating for easy stripping without release oil/surface preparation
- ✓ Reversible top and bottom profiles create either square or 12mm chamfered panel edges
- ✓ Robust aluminium top profile resists damage from helicopter
- ✓ Polyurethane bottom profile provides effective seal with casting bed
- ✓ Standard unit height easily extended with slide-on aluminium top strips
- ✓ Steel connector plates mechanically join QwikForm units end-to-end, maintaining perfect alignment
- ✓ Intersection piece forms right angle with adjacent QwikForm at any point, so no cutting required
- ✓ Steel end caps prevent concrete/dirt ingress, protect magnets and restrain top and bottom chamfers
- ✓ Accepts QwikMag high strength magnetic clamps to resist side wall pressure during pour

System Benefits



Replaces problematic timber/steel formwork

- Proprietary system, no fabrication or carpentry skills required
- Lighter and safer to handle than steel, no crane time required
- More rigid, robust and water-resistant than timber
- Full range of accessories, including side wall support clamps
- Long term reliability and integrity guaranteed, no hammer blows required for installation



Time and Labour Savings

- Lightweight interconnecting components, fast and simple to assemble
- Quick tap locks down magnets creating a straight line in an instant
- Panel thickness changed easily with slide on/off top profile
- Coloured components simplify last minute set up checks



Rationalises Formwork Range

- Three standard unit heights (150, 175, 200mm)
- Two height extension strips (30, 50mm)
- One standard length (5,600mm)
- Standard end-to-end connection plate
- Standard intersection piece forms right angle corner
- Standard reversible square/chamfered edge profile

Modular system, available to purchase as separate components to suit your requirements

Side Form

Three standard heights, each 5.6 metres long.



QFSF150	QwikForm Side Form 150mm x 5600mm Beige
QFSF175	QwikForm Side Form 175mm x 5600mm Grey
QFSF200	QwikForm Side Form 200mm x 5600mm Blue

Reversible Standard Aluminium Top Profile

Standard top profile to form either 150, 175 or 200mm panel thickness depending on the side form.

Creates a square flat edge or a 12mm fillet edge simply by reversing the profile.

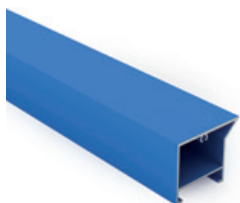


QFATC12	QwikForm Aluminium Top Chamfer 12mm x 5600mm Blue
---------	---

Reversible Aluminium Extension Strip

Slide on/off strip that replaces the standard aluminium top profile to form other panel thickness (180, 205, 225, 230, 250mm).

Creates a square flat edge or a 12mm fillet edge simply by reversing the profile.



QFEXT30	QwikForm Extension 30mm x 5600mm Beige
QFEXT50	QwikForm Extension 50mm x 5600mm Blue

Reversible Polyurethane Bottom Profile

Forms an efficient concrete seal with the casting bed.

Reversible to provide a flat or 12mm fillet edge.



QFPBSC12	QwikForm Polyurethane Bottom Seal Chamfer 12mm x 2800mm
----------	---

Steel End Cap

Screws into the locator holes on the formwork edge to prevent ingress of concrete/dirt and to protect the magnets.

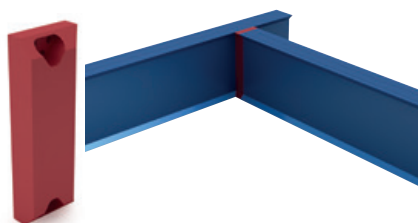


QFSEC150	QwikForm Steel End Cap 150mm
QFSEC175	QwikForm Steel End Cap 175mm
QFSEC180	QwikForm Steel End Cap 180mm
QFSEC200	QwikForm Steel End Cap 200mm

Intersection Piece

Red epoxy resin corner piece to join two QwikForm side forms at a perfect right angle, negating the need to cut lengths down and keeping the full length intact.

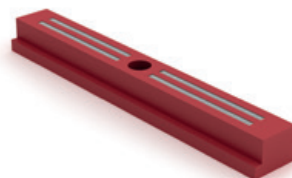
Allows joints at any point along the length of formwork.



QFRCJ150	QwikForm Resin Corner Joiner 150mm
QFRCJ175	QwikForm Resin Corner Joiner 175mm
QFRCJ180	QwikForm Resin Corner Joiner 180mm
QFRCJ200	QwikForm Resin Corner Joiner 200mm

Side Form Magnet

High strength magnet that locks down with a quick tap to fix the QwikForm unit in position. Recommended spacing 2 per 5.6 metre unit, position 1 metre from each end.



QFMAGNET	QwikForm Side Form Magnet
----------	---------------------------

Steel Connector Plate

Joins two QwikForm side forms together in perfect alignment.



QFSCP	QwikForm Steel Connector Plate
-------	--------------------------------

QwikMag Attachment



QFQM200FP	QwikForm QwikMag 200 Face Plate
-----------	---------------------------------

QwikMag Magnetic Clamp

Durable clamp that simply glides into position on the casting table and is then easily and accurately locked down without any backward movement. High performance magnet with large clamping area minimises number of supports required. Recommended spacing every 1.5-2.0 metres.



QwikMag200	QwikMag Standard Formwork Magnet
------------	----------------------------------

Suits a Panel Thickness from 150mm to 250mm

Panel Thickness (mm)	QwikForm Components Required
150	150mm Side Form + Standard Top Profile
175	175mm Side Form + Standard Top Profile
180	150mm Side Form + 30mm Extension Strip
200	200mm Side Form + Standard Top Profile or 150mm Side Form + 50mm Extension Strip
205	175mm Side Form + 30mm Extension Strip
225	175mm Side Form + 50mm Extension Strip
230	200mm Side Form + 30mm Extension Strip
250	200mm Side Form + 50mm Extension Strip



For more information on these products, contact:

Leviat

2/19 Nuttall Drive
Hillsborough
Christchurch 8022
New Zealand

Tel: +64 (0) 3 376 5205

Email: info.ancon.nz@leviat.com

For sales enquiries:

Email: sales.ancon.uk@leviat.com

Ancon.co.uk
Leviat.com

Sales Offices and Production

North Island:

246D James Fletcher Drive
Otahuhu
Auckland 2024
New Zealand